

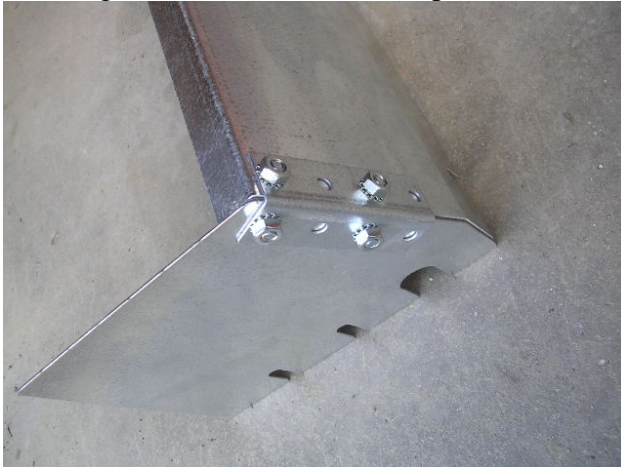
Riser Plate Instructions for Groomer Junior

Please review completely before installation and use. If there are any questions or comments please send e-mail to robert.j.gendron@valley.net or call 603-448-2043.



Parts may have burrs or sharp edges. Use leather gloves to handle parts whenever possible.

Assemble end plates to long plates with corner brackets and screws and nuts as shown. Hand tighten for now. Be sure to place screws inside and nuts outside.



Loosen the side bolt furthest from the blade on each side and the 4 blade bolts to get enough clearance to slide the riser plates behind the washers. Tighten all the hardware.



That's it! Now let's talk about use.

In general, the same use guidelines apply as in the main manual. The Groomer works a little differently with the plates on and you can pull and direct more material.

How it works differently:

With the plates on, smaller material flows under and through the teeth while larger stones are waiting for a depression to call home. There is no flow over the top as the combination of angle on the plates and the build up of material will actually provide a small amount of lift when there are no depressions to drop material into.



For driveways with the bump in the middle and 2 tire ruts this method below is just amazing. When you angle the unit as shown and remove one of the end plates, you can pull the material from the edge while riding on the center and quickly fill the ruts!

